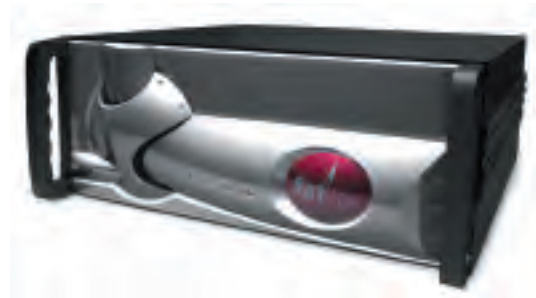


IPVPN

Highest level of security, fault tolerance, and speed for Managed or CPE VPNs. IPVPN comes in three standard speeds with higher speeds available upon request.



2 Mbps

LOAD BALANCING

- Round Robin
- On Failure
- Response Time
- Fastest Route

MANAGEMENT

- Policy Routing
- Basic Firewall
- Java interface
- Network configuration
- Emergency paging and e-mail alerts
- Automatic failover
- Speed Chart and Speed Meter
- SNMP ready

SECURITY

- Inherent NAT-based Firewall
- Reverse Mapping

WARRANTY

- 1 year full hardware warranty
- Includes 90 days of free technical support

DIMENSIONS

- 2.75"Hx12.5"Wx10.75"D (per unit) 1U Industry standard chassis

WEIGHT

- 24.5 lbs (per unit)

NETWORK INTERFACE

- Four 10/100 BASE Fast Ethernet (Three enabled and one disabled)

50/155 Mbps

Higher speeds available upon request

LOAD BALANCING

- Round Robin
- On Failure
- Response Time
- Fastest Route

MANAGEMENT

- Policy Routing
- Basic Firewall
- Java interface
- Network configuration
- Emergency paging and e-mail alerts
- Automatic failover
- Speed Chart and Speed Meter
- SNMP Ready

SECURITY

- Inherent NAT-based Firewall
- Reverse Mapping

WARRANTY

- 1 year full hardware warranty
- Includes 90 days of free technical support

DIMENSIONS

- 7"Hx19"Wx17.8"D (per unit) 4U industry standard rack-mount chassis
- High cooling, high reliability industrial design

WEIGHT

- 43 lbs (per unit)

NETWORK INTERFACE

- Four 10/100 BASE Fast Ethernet
- Fast Ethernet Fiber and Gigabit Ethernet available
- Additional WAN ports available

FatPipe IPVPN

Highest level of security, fault tolerance and speed for private, managed or CPE VPNs

MAKE YOUR VPN 300% MORE SECURE,
REDUNDANT AND FAST

FAT Pipe
IPVPN

New feature
add-ons
available
including QoS,
and Compression



FatPipe Networks
4455 South 700 East, 1st Floor, Salt Lake City, Utah 84107
www.fatpipeinc.com • Info@fatpipeinc.com
Tel: 800.724.8521 • 801.281.3434 • Fax: 801.281.0317

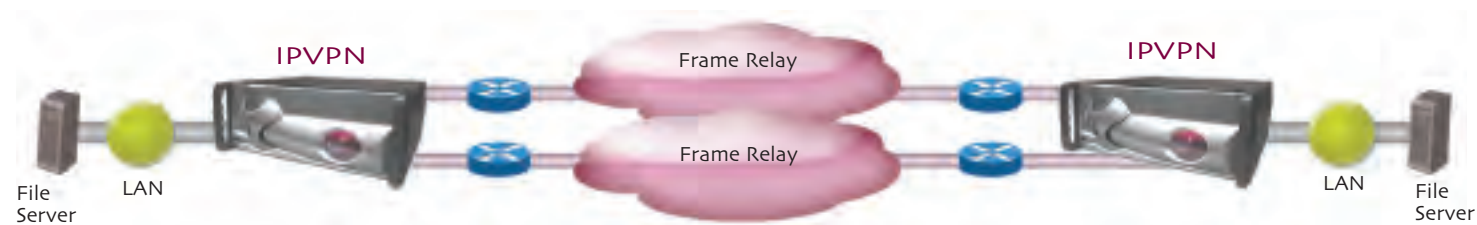
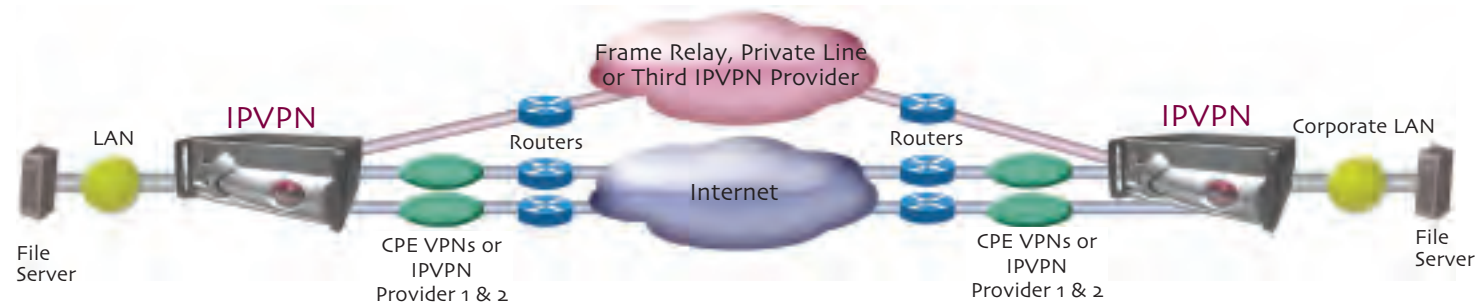
©2006 FatPipe Networks. FatPipe, the FatPipe logo, FatPipe Networks™, MPVPN®, and MPSec™ are trademarks or registered trademarks of Ragula Systems Development Company d.b.a. FatPipe Networks. All other product names mentioned herein are trademarks of their respective owners.

FatPipe IPVPN works with new and existing networks, creating a flexible system that balances load among multiple managed and CPE based VPNs as well as dedicated private networks. Corporations can deploy VPNs anywhere in the world and still get the highest level of WAN availability and uptime with FatPipe IPVPN.

FatPipe IPVPN can also provide an easy, low-cost migration path from Frame Relay to VPN. Companies can bond multiple private and public networks without BGP, NNI or new equipment at the provider's site.

FatPipe IPVPN gives the customer the option of using a VPN at the customer premise or with a managed VPN service as a backup to a frame relay or private line.

IPVPN also works with multiple managed VPN service providers when customers want to backup a managed service with another managed service as part of their disaster recovery/preparedness plan.



SECURITY, REDUNDANCY, RELIABILITY AND SPEED FOR MULTIPLE MANAGED AND CPE BASED VPNS

Patented and additional patents pending.

FatPipe IPVPN is the only product of its kind that works with multiple managed VPN services from multiple providers, Customer Premise Equipment (CPE) based VPNs, and private lines to achieve the highest level of reliability, redundancy, speed, and security for interoffice data transmissions.

YOU CANNOT AFFORD TO GO DOWN

- Network outages and degradations are causing significant losses in productivity and revenue, ranging from less than 1/10th of 1% of total revenue to almost 1% (up to \$74.6 million per year). Infonetics Research, The Cost of Downtime
- One third of U.S. businesses face the loss of critical data or operational capability in the wake of a disaster, unless investments toward disaster preparedness planning are made. Gartner Group; U.S. Firms Unprepared for Disasters
- 2000 study of downtime at 85 large organizations (over 1,000 employees), found an average of over \$32 million in revenue and productivity losses. Infonetics Research, The Cost of Downtime
- The growth of network complexity has produced many more potential points of degradation and failure. Infonetics Research, The Cost of Downtime

FEATURES & BENEFITS

- Bonds private and frame lines with Internet connections to backup a private network with a managed service or to migrate from frame to a managed network.
- **SmartDNS:** FatPipe's patent-pending technology intelligently balances load across all available lines and provides for redundancy of inbound IP traffic resulting in efficient delivery of information.
- **Fault Tolerance for Remote VPN Users:** FatPipe MPVPN uses an enhanced feature that provides redundancy for remote VPN clients using IPSec, PPTP as well as several other custom encryption algorithms, ensuring connectivity even when a WAN line fails.
- **Enhanced Route Control Tools:** IPVPN improved routing options give Administrators greater control over IP traffic delivery, allowing them to define routing criteria based on application and/or provider.
- **Enhanced Load Balancing Methods:** Enhanced load balancing options as well as IPVPN peer traffic.
- Remote upgrade to obtain new features.
- Dynamic load balancing and fixed routing capabilities.
- Supports multi-homing connections over multiple lines without ISP cooperation or expensive routers with programming capabilities.
- **Proxy ARP:** No need to reset gateway IP addresses for client computers in a LAN when integrating IPVPN into your network saving time and money.
- **MPSec™:** FatPipe's patented Multi-Path Security provides up to three times more security, making it virtually impossible to trap data flow and decrypt information in correct sequence.
- **Unit Failover:** An automatic unit failover option is available to customers that want a standby unit to backup the active MPVPN unit.
- **Full WARP functionality:** IPVPN incorporates all of the features and benefits of FatPipe WARP, providing WAN redundancy for access to internal servers.

AVAILABLE ADD-ON FEATURES & FUNCTIONS

- **QoS:** FatPipe Quality of Service (QoS) can help you optimize the efficiency of your internet connection by providing tools to control congestion and prioritize data flow up to ten levels.
- **Site Failover:** Companies that have or are building disaster recovery solutions can set up site failover between two or more FatPipe units. FatPipe is the only product that can automatically failover one multi line location to another multi line location from different carriers.
- **Compression:** Data compression can be added on to IPVPN, increasing network capacity up to three times. By compressing packet payload and eliminating redundant data traffic over a WAN, FatPipe Compression technology significantly increases a network's throughput, bringing significant cost savings immediately
- **Centralized Manager:** Manages all devices from a single location.