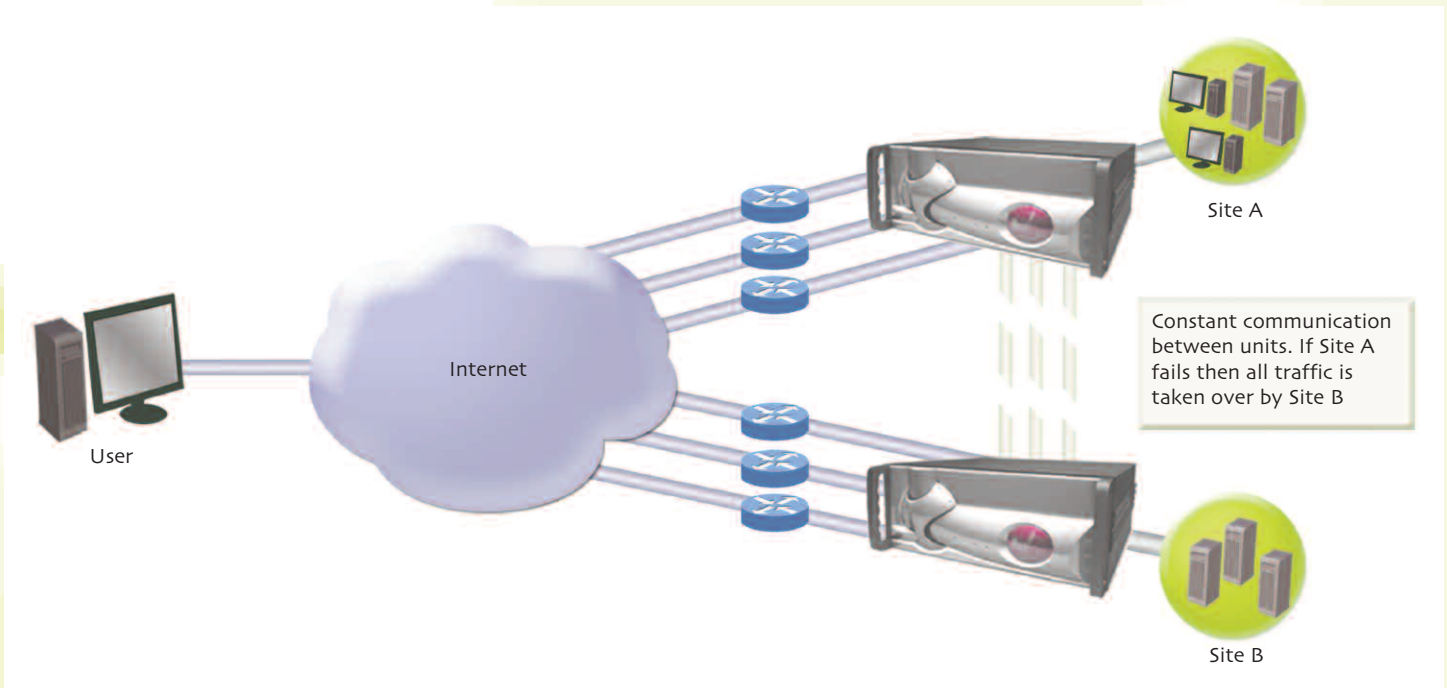


# FatPipe Site Load Balancing

Site Load Balancing, built on FatPipe's patent pending SmartDNS technology, provides resiliency and continuity for your business. It can distribute traffic between two sites, utilizing all lines available at each site.

Unlike traditional master/backup solutions, FatPipe Site Load Balancing utilizes both sites' bandwidth and other resources. Site Load Balancing gives you more availability of your other services.



Enable Site

Local Unit

SN#: 0000000000000001 Advanced

Peer Info

Select Serial No.  Add Delete

Local	Peer	WAN1 (36.48.60.2)
WAN2 (12.23.113.2)		UP
WAN1 (24.36.48.2)		UP

Figure 1 - FatPipe Site Load Balancing Interface

To implement Site Load Balancing, two or more sites should be configured and ready to accept incoming requests for domain names. SmartDNS on all sites is configured identically. Any change made to one site will be propagated to all other sites.

Site Load Balancing determines the status of each site dynamically. If any lines are down at a site, Site Load Balancing will detect it. Every line at each location is given a priority of primary or backup. Only IP addresses belonging to primary lines will be handed out for DNS replies. If all primary lines are down, then IP addresses belonging to backup lines will be handed out for DNS replies.

Once the site units are able to communicate with each other, you will see a table showing the status of the lines at each location (see Figure 1).

FatPipe Site Load Balancing is an optional feature available upon request.



4455 South 700 East  
Salt Lake City, Utah, 84107  
Tel: 800.724.8521  
Fax: 801.281.0317  
www.fatpipeinc.com  
sales@fatpipeinc.com