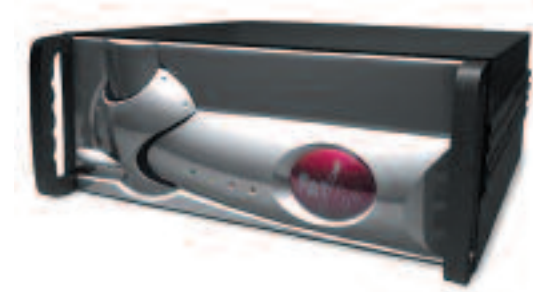


WARP

FatPipe WARP aggregates up to three T3s (higher speeds available) over multiple ISPs and backbones or the same ISP with different POPs for the highest level of redundancy, reliability and speed of inbound and out-bound Internet traffic over a Wide Area Network. WARP is perfect for mid-size ASPs, ISPs, and corporations that want redundant access to internal servers.



50/155 Mbps

Higher speeds available upon request

LOAD BALANCING

- Round Robin
- On Failure
- Response Time
- Fastest Route

MANAGEMENT

- Policy Routing
- Basic Firewall
- Java interface
- Network configuration
- Emergency paging and e-mail alerts
- Automatic failover
- Speed Chart and Speed Meter
- SNMP Ready

SECURITY

- Inherent NAT-based Firewall
- Reverse Mapping

WARRANTY

- 1 year full hardware warranty
- Includes 90 days of free technical support

DIMENSIONS

- 7"Hx19"Wx17.8"D (per unit) 4U Industry standard rack-mount chassis
- High cooling, high reliability industrial design

WEIGHT

- 43 lbs (per unit)

NETWORK INTERFACE

- Four 10/100 BASE Fast Ethernet
- Fast Ethernet Fiber and Gigabit Ethernet available
- Additional WAN ports available



FatPipe Networks
4455 South 700 East, 1st Floor, Salt Lake City, Utah 84107
www.fatpipeinc.com • Info@fatpipeinc.com
Tel: 800.724.8521 • 801.281.3434 • Fax: 801.281.0317

*2006 FatPipe Networks. FatPipe, the FatPipe logo, FatPipe Networks™, MPVPN™, and MPSec™ are trademarks or registered trademarks of Ragula Systems Development Company d.b.a. FatPipe Networks. All other product names mentioned herein are trademarks of their respective owners.

FatPipe WARP

Redundancy, Reliability, Speed & Bidirectional Load Balancing

MAKE YOUR WAN 300% MORE
REDUNDANT, RELIABLE AND FAST FOR
BIDIRECTIONAL IP TRAFFIC

FAT Pipe
WARP

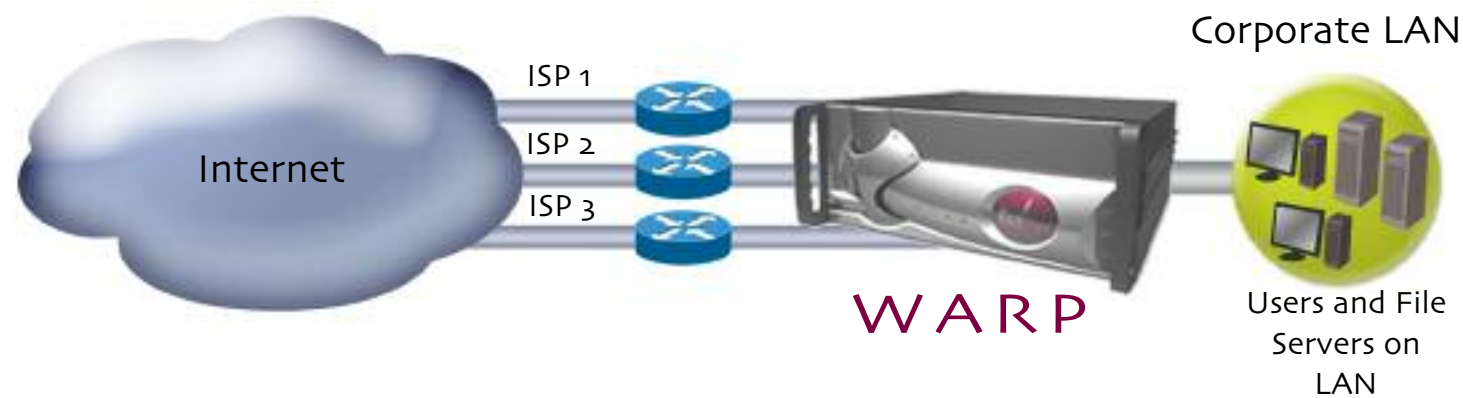
NEW! Fault
Tolerance for Remote
Users, Enhanced
Load Balancing
Methods, and Route
Control Tools

FatPipe WARP combines multiple WAN connections of any kind over multiple backbones and ISPs (or the same ISP with different POPs), to provide the world's highest level of reliability and redundancy for inbound and outbound IP traffic. Companies can host servers internally with a high degree of availability.

FatPipe WARP technology significantly enhances customers' ability to maintain the integrity of their Wide Area Networks (WAN). Features such as dynamic load balancing and intelligent, automatic failover capabilities substantially increase the efficiency of their WANs.

Advanced product features include SmartDNS, Policy Routing, and a new load balancing method, Fastest Route. SmartDNS is a patent pending technology from FatPipe that efficiently balances inbound load over multiple lines and will intelligently sense when a line is down and reroute IP packets to available lines when a failure occurs.

Policy routing gives administrators more control over their networks, allowing them to define how they would like data to be transmitted over their networks based on protocol, source and destination IP address, and/or source and destination port.



REDUNDANCY, RELIABILITY, SPEED, AND BIDIRECTIONAL LOAD BALANCING

Patented and additional patents pending.

FatPipe WARP is a low cost solution for companies that require high levels of redundancy and availability for their WAN networks as well as companies looking for maximum bandwidth utilization. Companies that host internal servers that are accessed from outside their LANs, such as web, Citrix®, email and database servers, require robust and redundant WANs to keep their business running and to avoid revenue and productivity losses due to network downtime.

WARP provides the highest level of fault tolerance for WAN infrastructures, ensuring that inbound and outbound traffic reach their destination even when an ISP or WAN component fails.

YOU CANNOT AFFORD TO GO DOWN

- Network outages and degradation are causing significant losses in productivity and revenue, ranging from less than 1/10th of 1% of total revenue to almost 1% (up to \$74.6 million per year). Infonetics Research, The Cost of Downtime
- One third of U.S. businesses face the loss of critical data or operational capability in the wake of a disaster, unless investments toward disaster preparedness planning are made. Gartner Group; U.S. Firms Unprepared for Disasters
- 2000 study of downtime at 85 large organizations (over 1,000 employees), found an average of over \$32 million in revenue and productivity losses. Infonetics Research, The Cost of Downtime
- The growth of network complexity has produced many more potential points of degradation and failure. Infonetics Research, The Cost of Downtime

FEATURES & BENEFITS

- Provides highly reliable and redundant access to internal servers including Citrix®, web, SCM, CRM, database and e-mail servers.
- **SmartDNS:** FatPipe's patent-pending technology intelligently balances load across all available lines and provides for redundancy of inbound IP traffic resulting in efficient delivery of information.
- **Reverse Mapping:** Allows companies to conserve IP addresses and direct application traffic to specific servers.
- Bonds multiple connections of similar or dissimilar speeds without BGP programming.
- Supports multi-homing connections over multiple lines without ISP cooperation or expensive routers with programming capabilities.
- Fully supports Simple Network Management Protocol (SNMP) MIB-II.
- **Enhanced Route Control Tools:** WARP's improved routing options give Administrators greater control over IP traffic delivery, allowing them to define routing criteria based on application and provider.
- **Proxy ARP:** Allows administrators to integrate WARP into their network without having to change gateway IP addresses on client computers, saving time and money.
- **Unit Failover:** An automatic unit failover option is available to customers that want a standby unit to backup the active WARP unit.
- **Basic Firewall:** Allows administrators to block any inbound and outbound traffic.

AVAILABLE ADD-ON FEATURES & FUNCTIONS

- **QoS:** FatPipe Quality of Service (QoS) can help you optimize the efficiency of your internet connection by providing tools to control congestion and prioritize data flow up to ten levels.
- **Site Failover:** Companies that have or are building disaster recovery solutions can set up site failover between two or more FatPipe units. FatPipe is the only product that can automatically failover one multi line location to another multi line location from different carriers.
- **IPSec:** Allows you can create point-to-point VPN tunnels without the need of an additional encryption device.